

A3

F

E

D

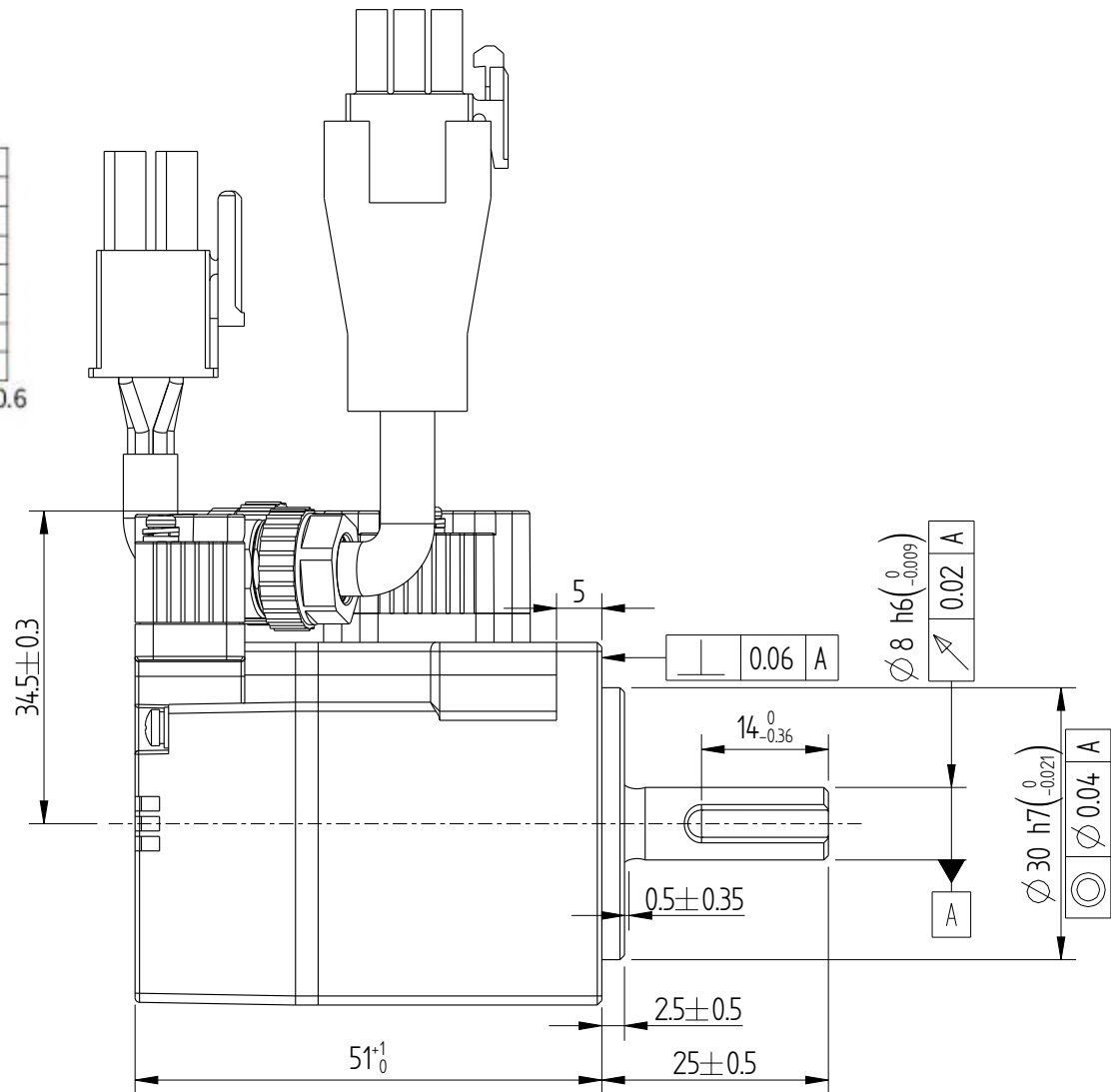
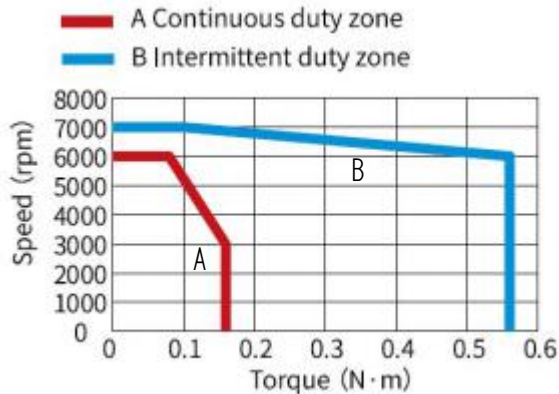
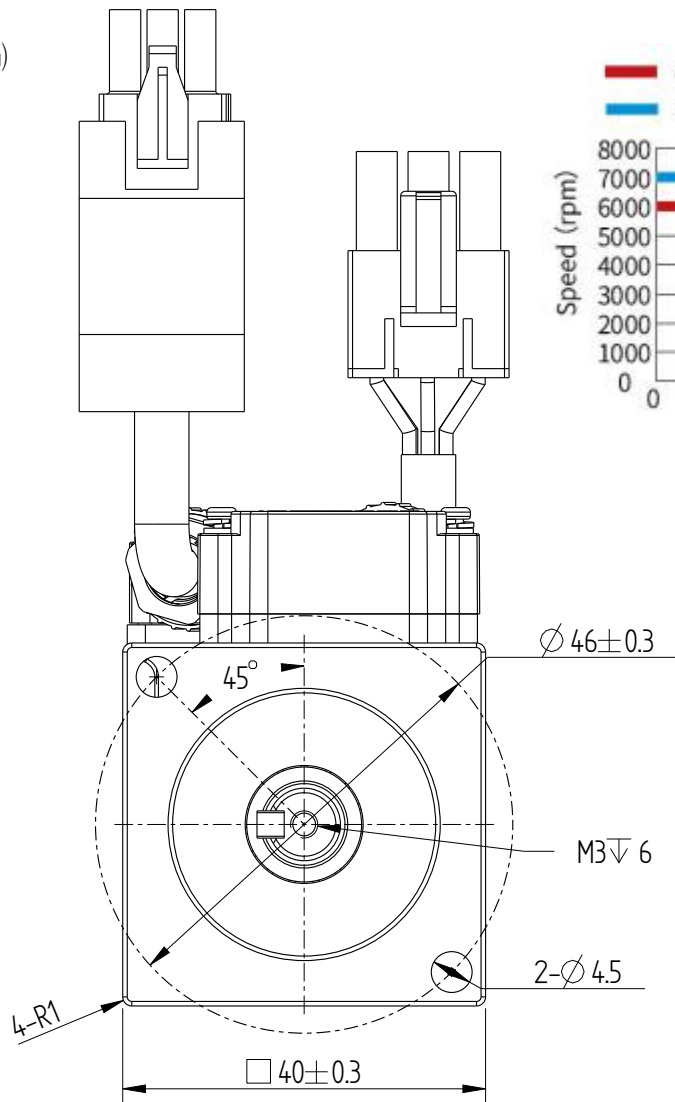
C

B

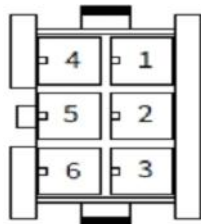
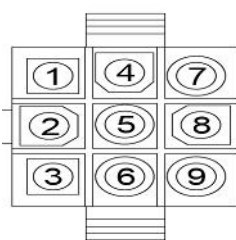
A

Amendment	Description

Unit: Millimeter (mm)



Encoder adapter connector Power wire adapter connector



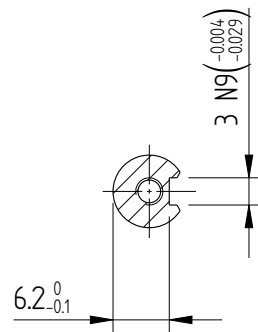
Encoder adapter connector

7pin termina	1	4	3	6	9	8	7
Core color	blue	blue black	yellow	yellow black	red	black	Ground wire
definition	DC+	DC-	PS+	PS-	+5V	0V	shield
	Pair		Pair		Pair		

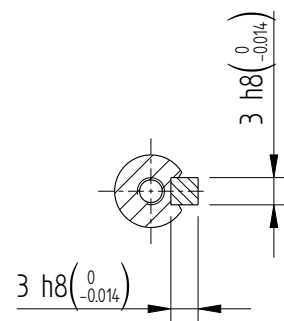
Power wire adapter connector

6pin terminal	5	4	2	1
Core color	chartreuse	red	black	white
definition	PE	W	V	U

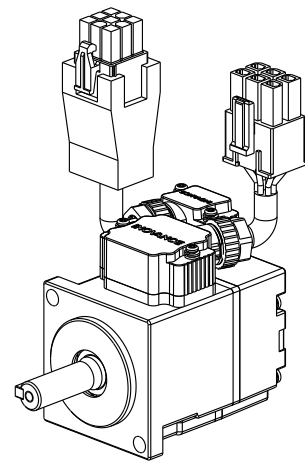
note:1, The lead wire cable length about 300±20mm.

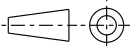


Dimension of shaft end



Dimension of shaft end with key



				Motor Outline Drawing			0111A167-WX	
B01	Replace	/	20250530					
Version	Change method	Changed by	Date					
Design	/							
Check	/			/			Mark 	INOVANCE
Craft	/							
Verify	/							
Standardization	/			Weight	Scale	Version	Page 1 of 1	
Approve	/			0.24kg	1:2	B01	Model	MS1H4-05B30CB-A330R-S-INT